

# PROTECT-CH

Prophylactic Therapy in Care Homes Trial

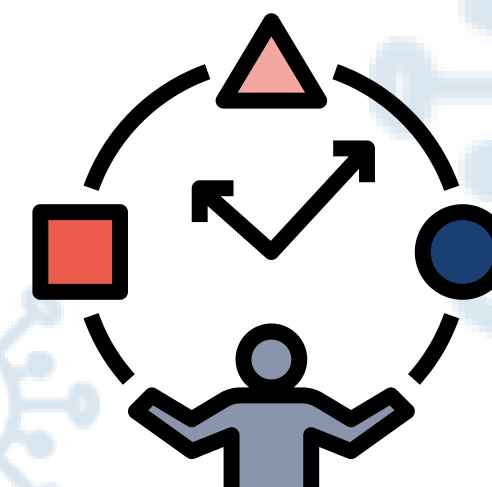
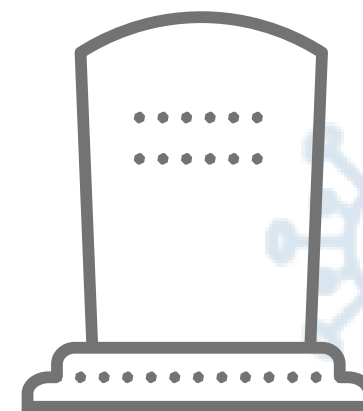
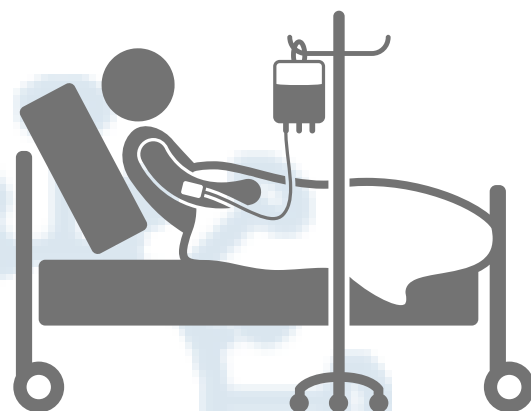
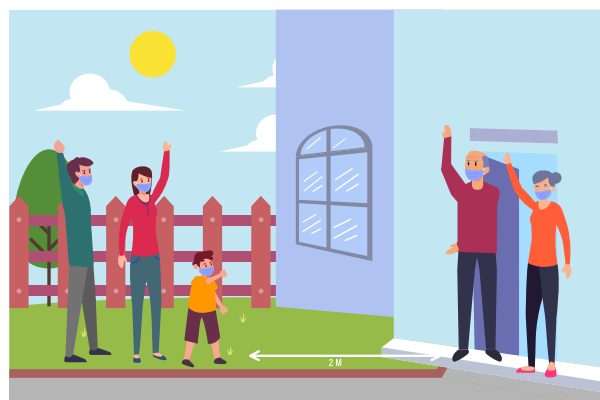
**Background  
to trial**

# Purpose of Training

To provide an overview of the PROTECT-CH trial,  
and why it is still important in the era of vaccines.

# Impact of COVID-19 on Care Homes

- Major cause of illness
- Major cause of disability
- Major cause of death
- Major impact on normal care and life in the home
- Limits visits from family and friends
- Impacts on quality of life and mental health of residents and staff



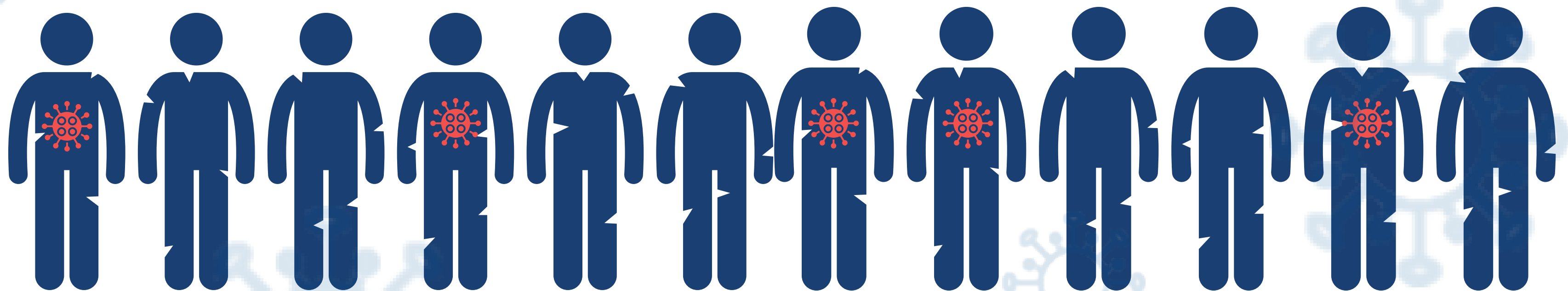
Most UK care homes have had at least one resident or staff member test positive for COVID-19



At least

40,000

Care home residents have  
died with COVID-19



There is some  
good news though...



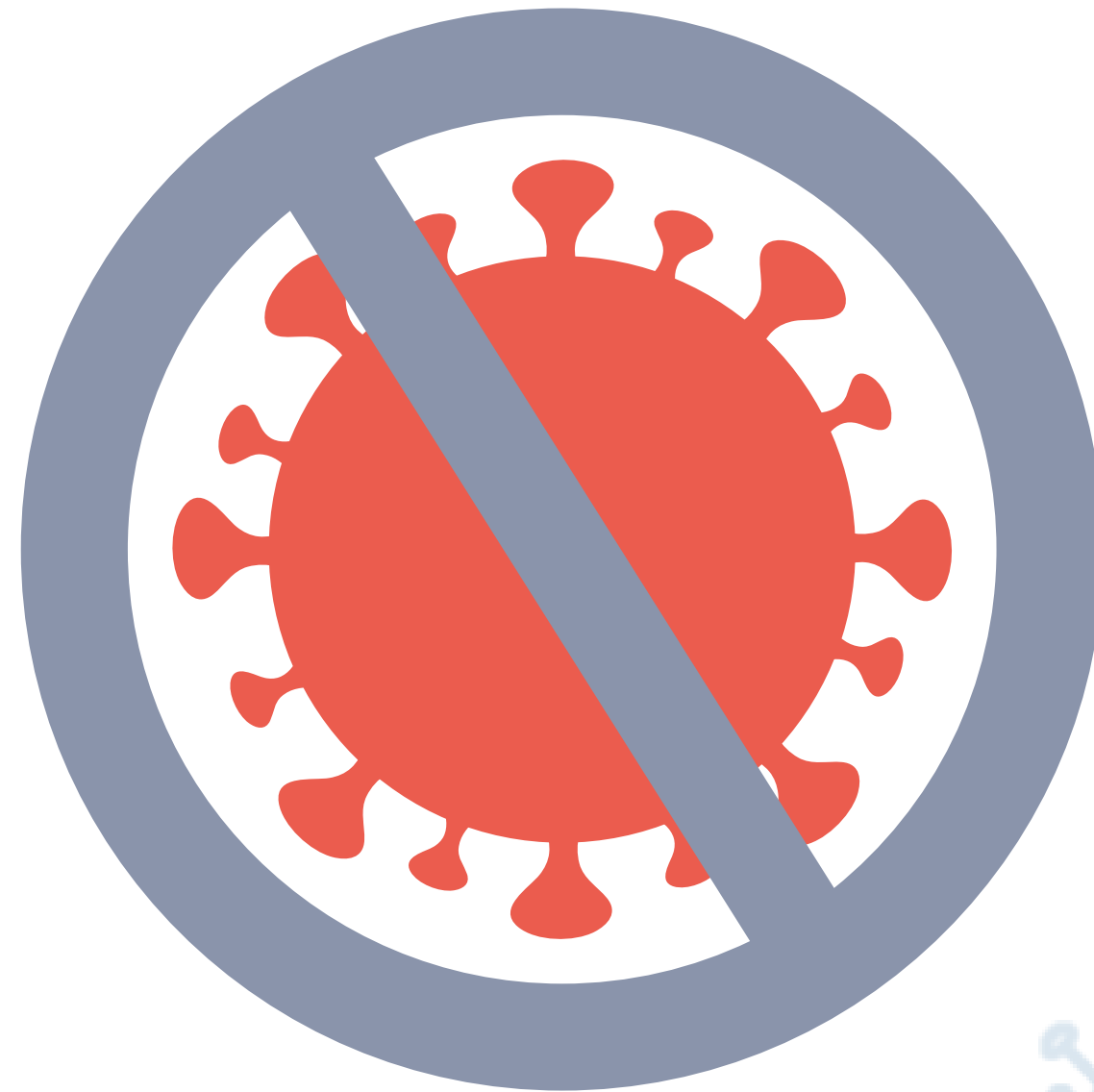
The COVID-19 vaccination programme  
has started in the UK  
and all eligible care home residents  
have been offered vaccinations



# However...



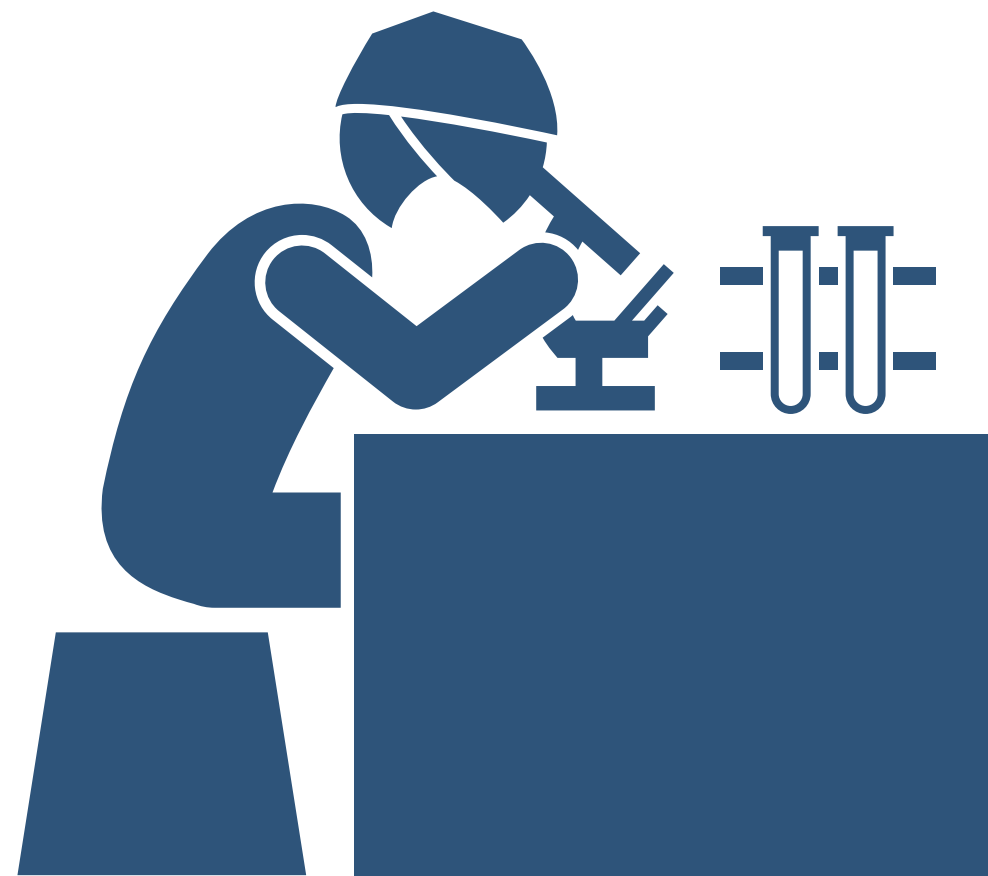
The vaccine may not stop infection completely for a variety of reasons:



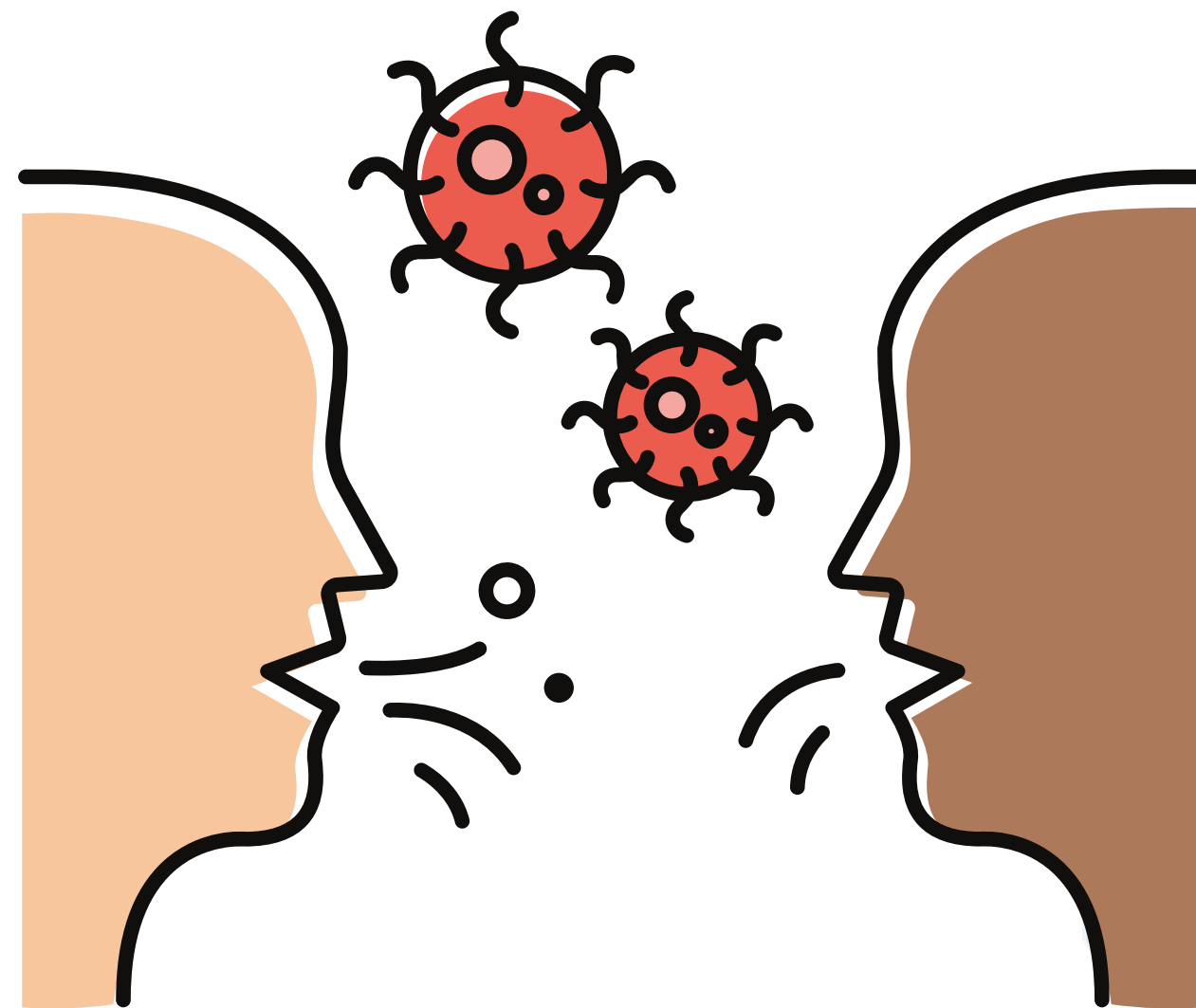
# No vaccine is 100% effective

Trials have shown that the vaccine protects between 60%-95% of people against getting COVID-19

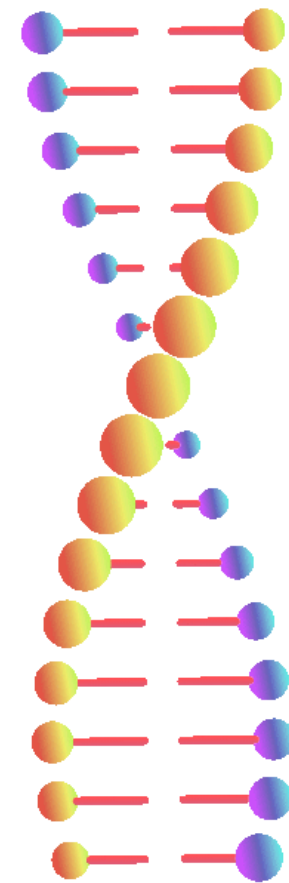
However, the trials didn't include people over 80



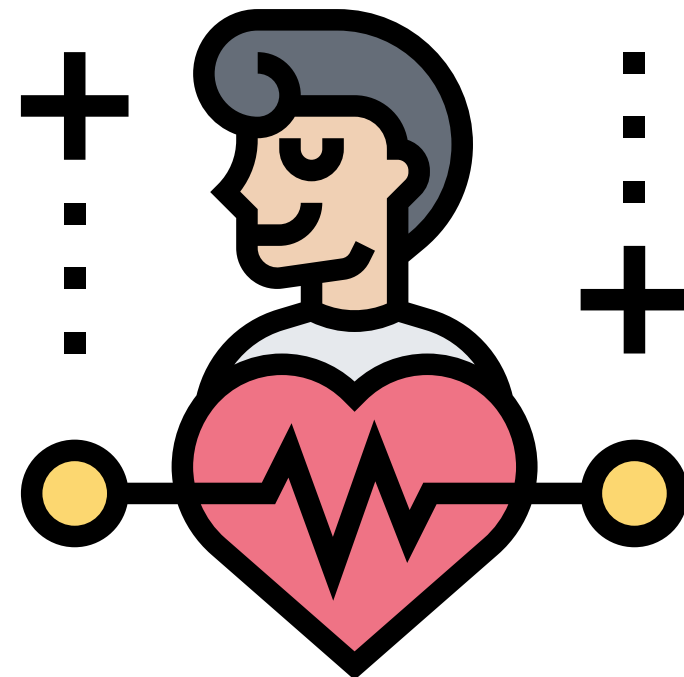
# Vaccines may not completely stop the virus being passed on



Some new variants of the virus may be  
more resistant to existing vaccines



So we still need to find  
ways to stop the virus being passed on  
and reduce the severity of the disease  
to keep care home residents safe



# PROTECT-CH

Prophylactic Therapy in Care Homes Trial

The PROTECT-CH trial has  
been set up to test several medications  
to see if they:



Reduce the  
number of  
residents  
infected with  
COVID-19

AND

Reduce the  
severity of the  
disease and  
deaths of  
residents from  
COVID-19

It is an Urgent Public Health trial  
which has been funded by  
the National Institute for Health Research  
and is managed by the  
University of Nottingham



University of  
**Nottingham**  
UK | CHINA | MALAYSIA

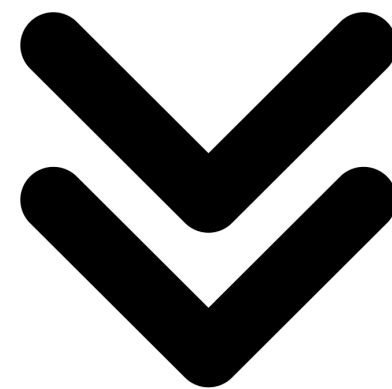
FUNDED BY

**NIHR** | National Institute  
for Health Research

Approximately 750 care homes in  
England, Northern Ireland, Scotland and Wales  
will be involved



**which is more than  
22,000 care home residents!**



**The Government's independent  
medical and scientific advisers are recommending  
which medications they want us to test**

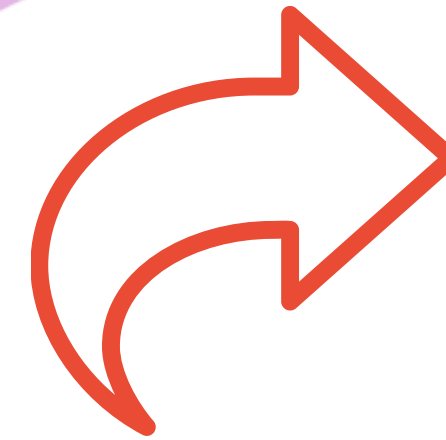


The medications that will be tested will either be:



**PRE-EXPOSURE:**  
These will be given  
before an outbreak  
of COVID-19 occurs  
at a care home

OR



**POST- EXPOSURE:**  
These will be given  
after an outbreak  
of COVID-19 occurs  
at a care home



Residents who agree to take part  
will be allocated as a group  
to take either:

A treatment  
which aims to  
reduce  
transmission and  
seriousness of  
COVID-19  
(plus standard care)



OR

Standard care  
(No trial medication)

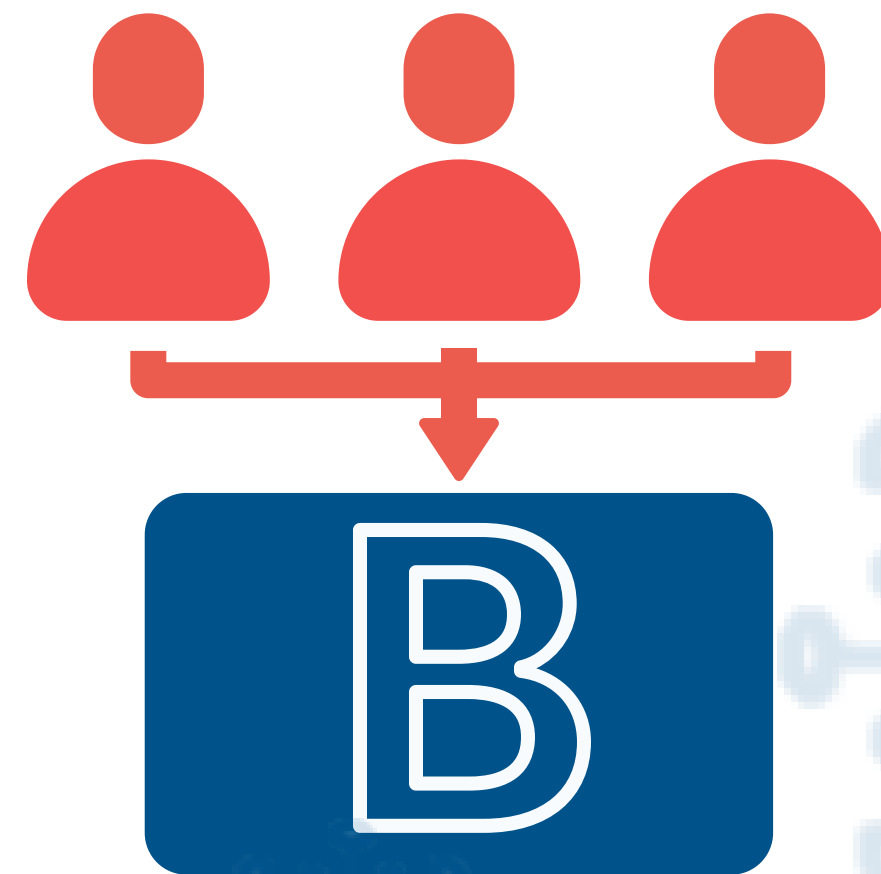


This is  
chosen at random by a computer  
(like a toss of a coin)

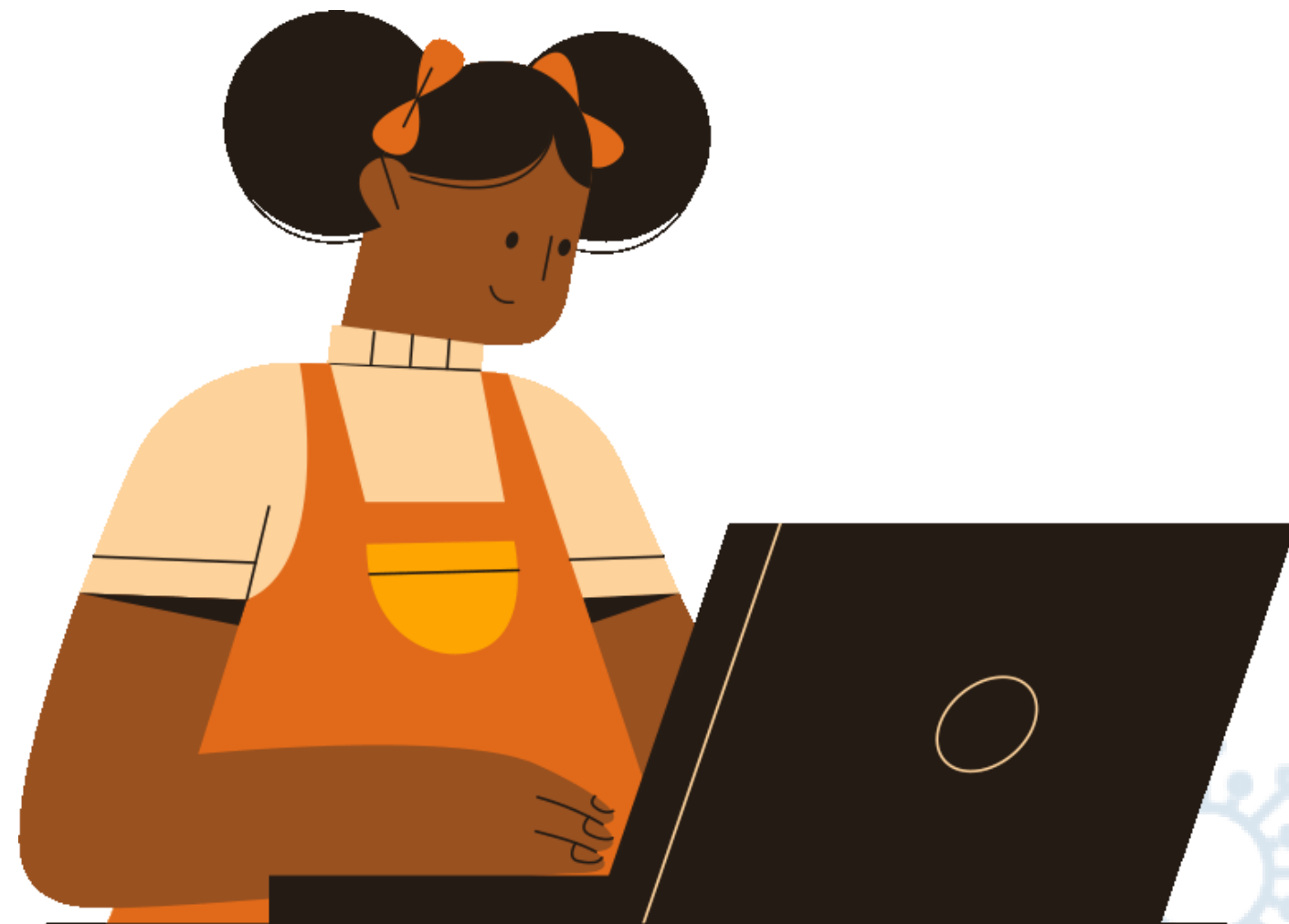


All residents involved in the trial at a care home will be in the same group

A



Trained care home staff will be asked to collect information about the residents and enter it into the secure trial database



This information will help  
answer the research question...



Which trial medications given to  
prevent COVID-19 infection  
within a care home  
are the most effective  
compared to standard care?



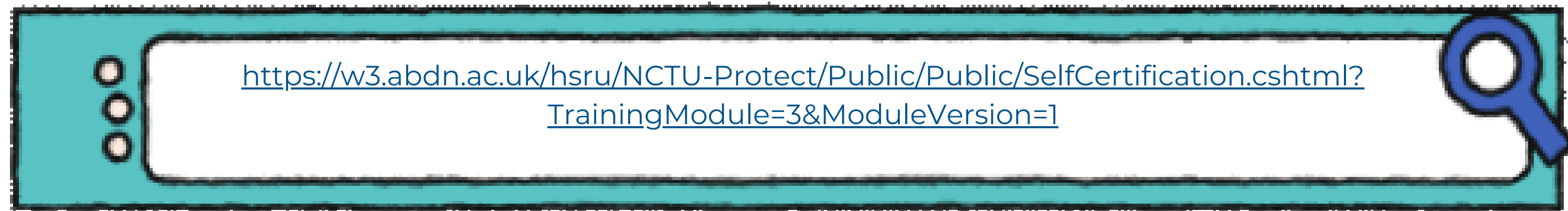
Thank you for watching!

You have now completed the  
**Background to trial**  
Training Module



Please remember to complete your self assessment form  
to confirm you have undertaken this training

This can be found at:

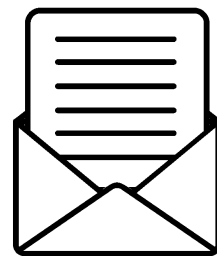


Or you can access it via  
mobile here:





Please get in touch with us  
if you have any questions:



[protect-trial@nottingham.ac.uk](mailto:protect-trial@nottingham.ac.uk)



0115 74 87710

*Thank  
you*